

“Control Is an Illusion”: New Work from Ben Tricklebank at Gazelli Art House

ARTSY
MAY 31ST, 2016 11:52 PM



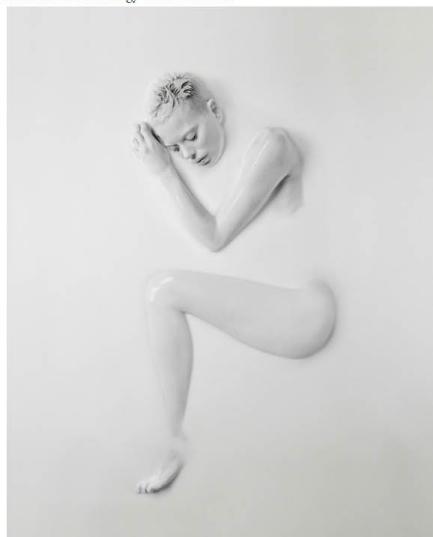
Ben Tricklebank
Ender-3, 2016
Gazelli Art House

“Ender,” Ben Tricklebank’s new show at Gazelli Art House in London, takes its title from the type of device that serves as both an encoder and a decoder—hence the portmanteau—on a signal or data stream. Fittingly, Tricklebank’s solo show, his first in the UK, explores our developing and sometimes fraught relationship with technology.



Ben Tricklebank
Ender-Reflection Pool, 2016
Gazelli Art House

The centerpiece consists of a brightly glowing reflecting pool set into the gallery’s ground floor. Filled with an opaque, milky liquid, the pool is meant to serve, in part, as a blank canvas. The L.A.-based filmmaker, photographer, and interdisciplinary artist has rigged the pool with a system of projectors and sensors, which work together to encode visitors into the art. Sensors detect movement in the gallery space, and as visitors approach the pool, they activate its liquid substance, causing it to ripple. The closer you get, the more vigorous the ripples become. Meanwhile, the silhouette of a human forms just beneath the surface, suggesting that we are more immersed in technology than we realize.



Ben Tricklebank
Ender-1, 2016
Gazelli Art House

Near the pool, Tricklebank's photographs carry the theme of immersion even further. A nude woman appears, her body partially submerged in thick, white liquid. In one image, the pristine whiteness of her liquid surroundings is shot through with streaks of black ink swirling around her body.



Ben Tricklebank
Endec-4, 2016
 Gazelli Art House

In another, Tricklebank replaces the milky bath with a stark black overlay. As in the submerged silhouettes from the nearby pool, the woman's form can barely be made out against the blackness. Words, glowing like neon or text on a computer screen, march across the surface, proclaiming, "CONTROL IS AN ILLUSION." The repeated dictum feels like a prison, exposing only the vague contours of her being.

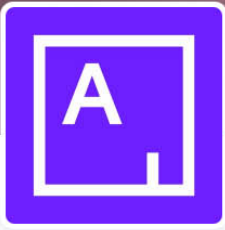
—Karen Kedmey

"Ben Tricklebank: Endec" is on view at Gazelli Art House, London, May 12–Jun. 25, 2016.

Follow Gazelli Art House on Artsy.

SHARE ARTICLE





TWEETS 20.3K FOLLOWING 3,190 FOLLOWERS 204K LIKES 4,849 LISTS 1

Following

Artsy

@artsy FOLLOWS YOU

Making the art world accessible to anyone with an internet connection.

New York, NY

artsy.net

Joined October 2009

Tweet to Message

Tweets Tweets & replies Media

Artsy @artsy · 5h
 An artist examines our complicated relationship with technology at @GazelliArtHouse: bit.ly/1WYHPcY



Retweet 12 Like 25

Who to follow · Refresh · View all

- British Council Lit @LitBriti... Follow
- Deutsche Bank @Deutsc... Follow
- Allison Arieff @aarieff Follow

Find friends